

# MIDIPlay 1.0 Installation Instructions

**MIDIPY.ZIP** should contain the following files:

**MIDIPLAY.TBK**  
**MIDIPLAY.HLP**  
**MIDIPLAY.DAT**  
**MIDIPLAY.ICO**  
**MIDI.ATM**  
**REGISTER.TXT**  
**README.WRI - THIS FILE**  
**TBKDLG.DLL - INCLUDED IN THE TOOLBOOK RUNTIME FILES ALSO (SEE BELOW)**

Two new files will be created when you first use the program: **TITLE.DAT** and **PATH.DAT**.

MIDIPlay requires the following to run:

**Windows 3.1**  
**ToolBook Runtime 1.53**

ToolBook Runtime 1.53 contains the following files:

**TBOOK.EXE**  
**TBKBASE.DLL**  
**TBKCOMP.DLL**  
**TBKDLG.DLL**  
**TBKFILE.DLL**  
**TBKWIN.DLL**  
**TBKUTIL.DLL**

This runtime can be found on CompuServe's **WINFUN** Forum Library 3 as **SCRBL2.ZIP**

The ToolBook runtime files listed above should all be placed in a directory which is located on your path. The **Windows** directory is a good place!

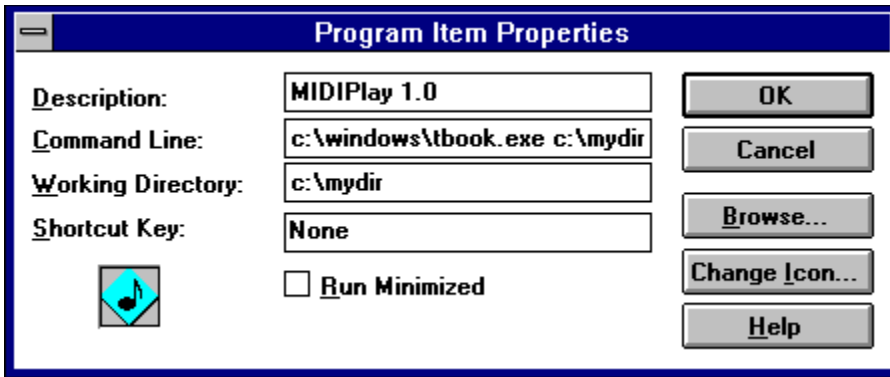
Once you have copied the ToolBook runtime files to an appropriate directory you are ready to set up MIDIPlay.

## Setting Up MIDIPlay 1.0 for Windows

Place all of the files included in **MIDIPY.ZIP** into a directory of their own. You are now ready to create a Program Manager group item.

In Program Manager choose NEW from the FILE menu.

Choose Program Item.



The above dialog box will appear. Fill it in as shown replacing the directory names with the names of the directories you have placed both the ToolBook runtime files in and the MIDIPlay files in.

Here is the full command line:

**c:\windows\tbook.exe c:\mydir\midiplay.tbk**

Make sure there is a space between tbook.exe and c:\mydir\midiplay.tbk

Again, make sure you use the appropriate directories for your system.

Make sure you enter the **Working Directory**. This is the directory where you placed the MIDIPlay files.

**MIDIPLAY.ICO** has been included so that you can change the icon in Program Manager.

You can now double-click on your newly created Program Manager item to begin using MIDIPlay.

\*\*\*\*\*  
\*

**If you use another shell besides Program Manager just make sure you use the COMMAND LINE shown above. Also make sure you include the WORKING DIRECTORY.**

**If you would prefer to double-click on the file MIDIPLAY.TBK from the File Manager to start MIDIPlay you can. Just make sure you associate TBK files with the executable file TBOOK.EXE. Check your Windows manual for information on associating data files with their executables.**

**Please check out the on-line help for information on using MIDIPlay.**